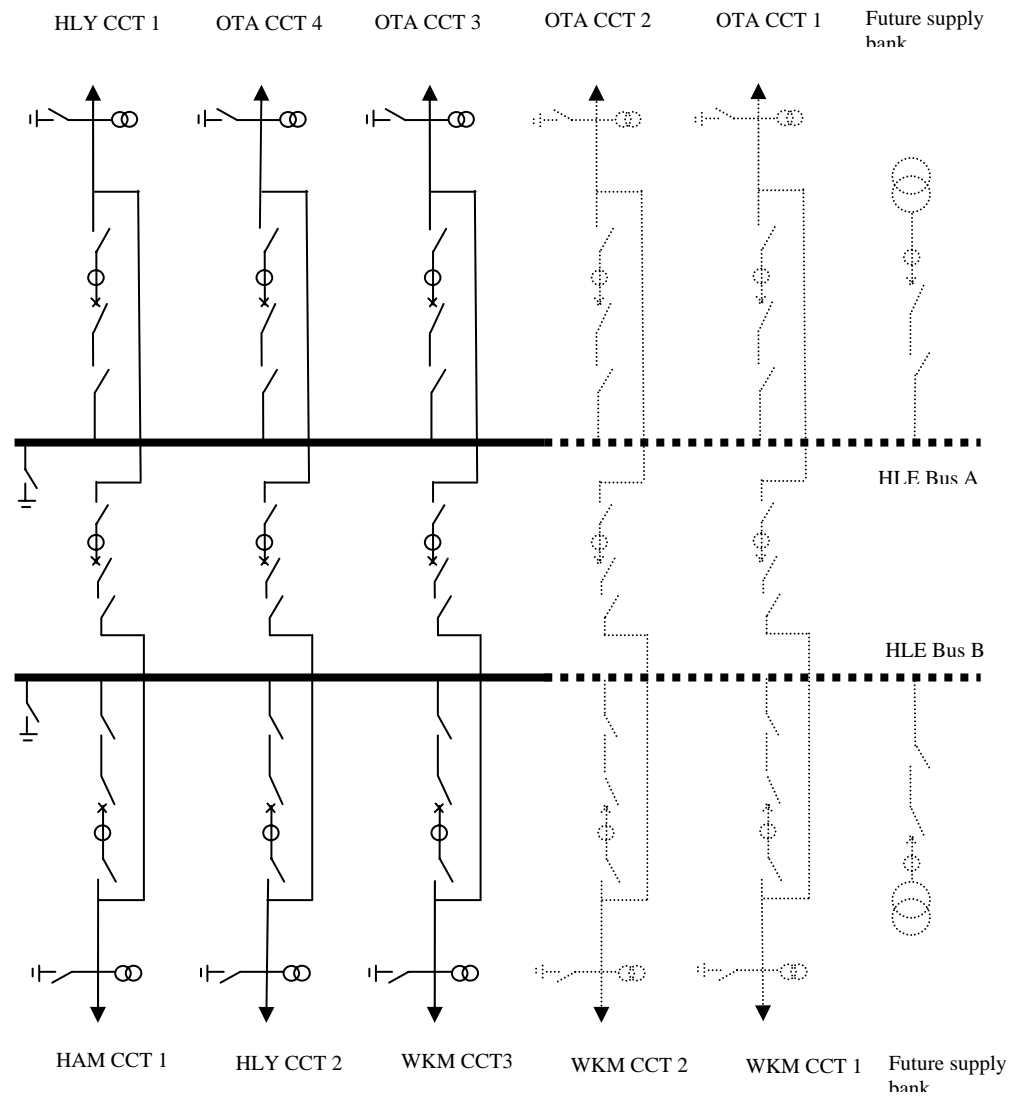


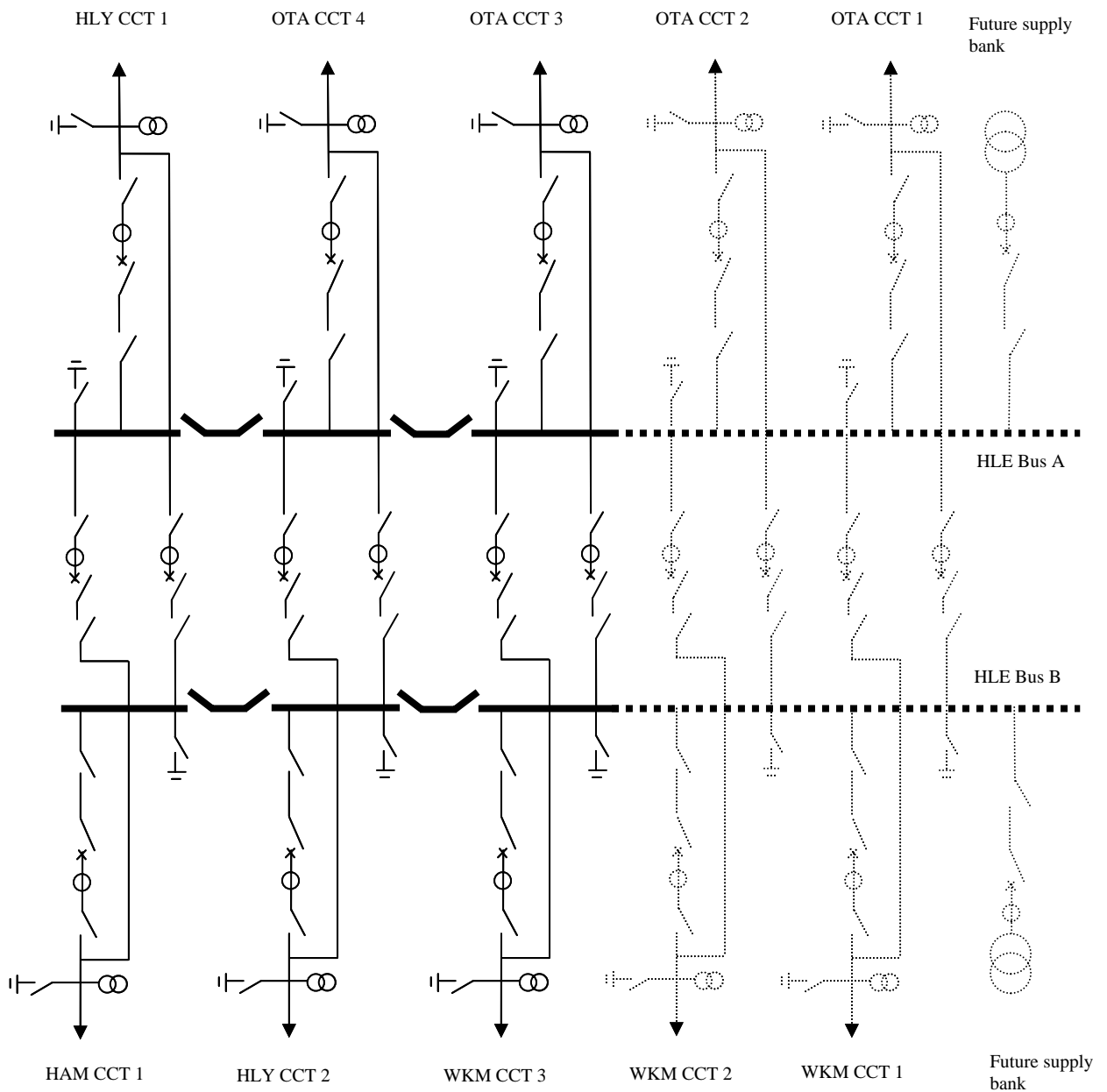
## Breaker and Half SLD



### Notes:

1. A fault of the half CB will cause the tripping of both circuits. Therefore, a single fault could cause the outage of the OTA-(HLE-)WKM 3 circuit, which is the most onerous circuit outage for the existing system. HLE provides no increase in security for this particular fault compared with the existing system.
2. The dotted bus extension is for the possible future connection of OTA-WKM 1&2 and/or supply transformers. The site layout will allow for these possible future connections if this can be reasonably achieved considering the site contours.

## HLE Double Bus SLD



### Notes:

1. A fault of any equipment (CB, CT, DIS or bus section) will cause the tripping of either one or no circuits. Therefore, no single fault will cause an outage of the OTA-WKM 3 circuit (i.e. through transmission from WKM to OTA), which is the most onerous circuit outage for the existing system.
2. The dotted bus extension is for the possible future connection of OTA-WKM 1&2 and/or supply transformers. The site layout will allow for these possible future connections if this can be reasonably achieved considering the site contours.