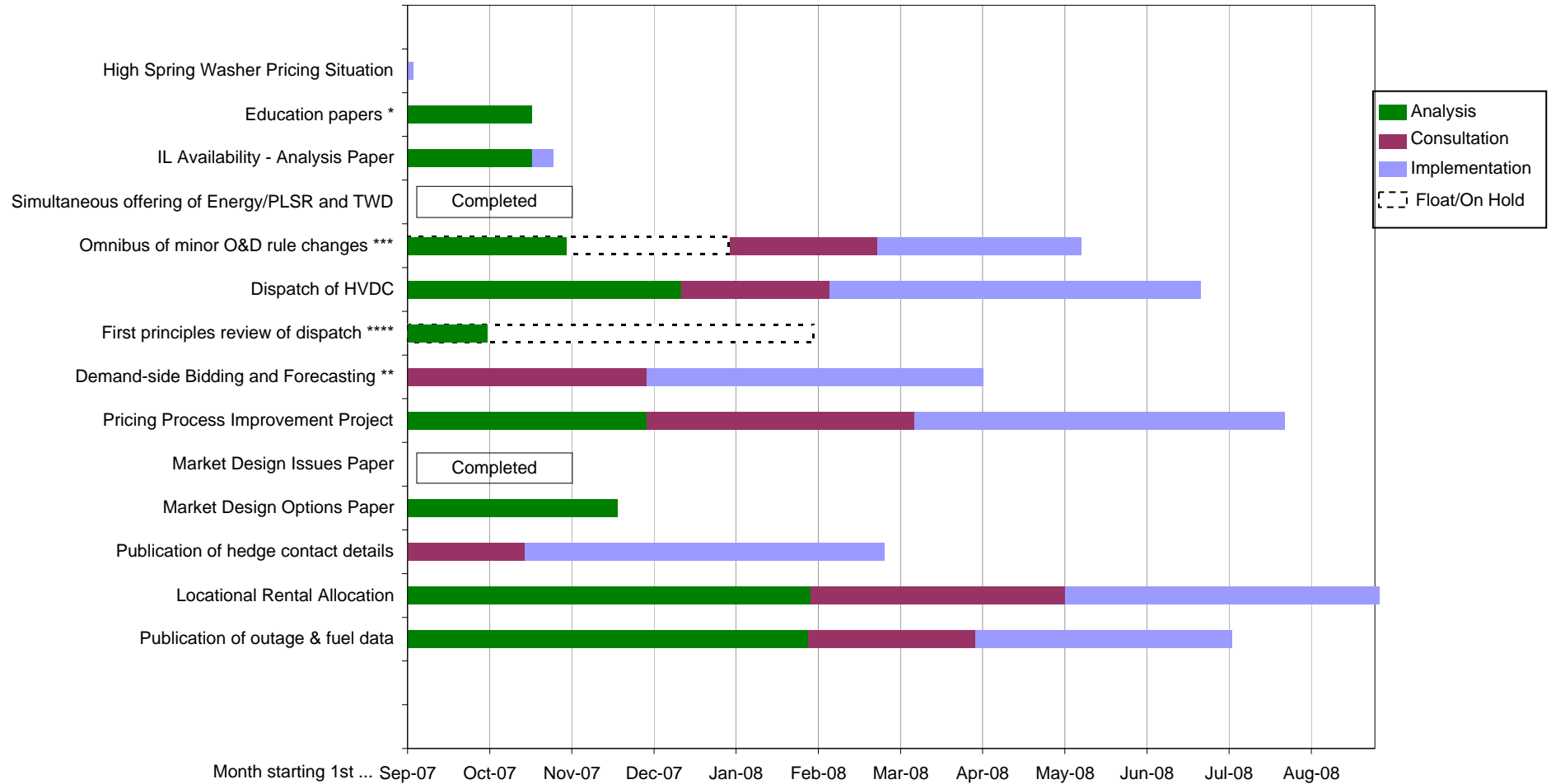


Indicative Wholesale Work Programme as at 28 September 2007



* Papers covering generation dispatch compliance, IL offer & dispatch compliance, and bona fide offer changes. ** Actual implementation will be scheduled after the completion of System Operator's SPD upgrade project (MSP).

*** Work will progress as resources permit. **** Project approved. Progress will depend on outcomes from other projects (eg WGIP, Market Design Review)

Disclaimer: Information on this chart is indicative only and subject to change. The Electricity Commission will not be responsible for any loss or inconvenience arising from relying on this information or for any omissions or errors in it.